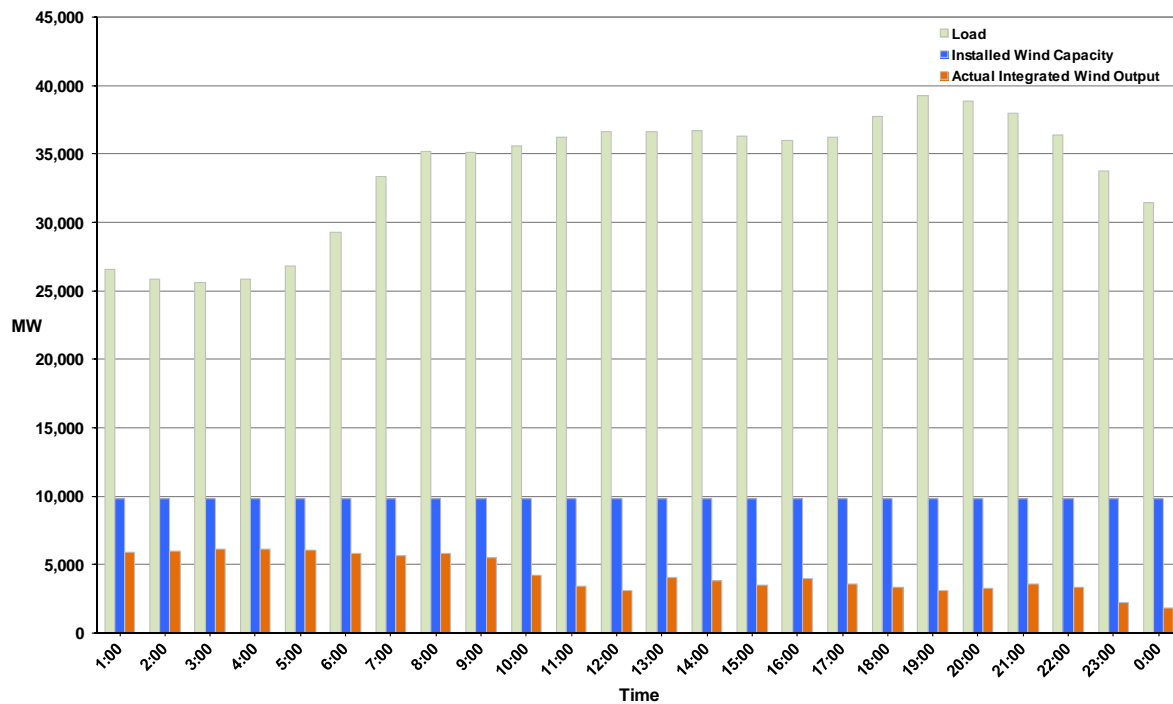




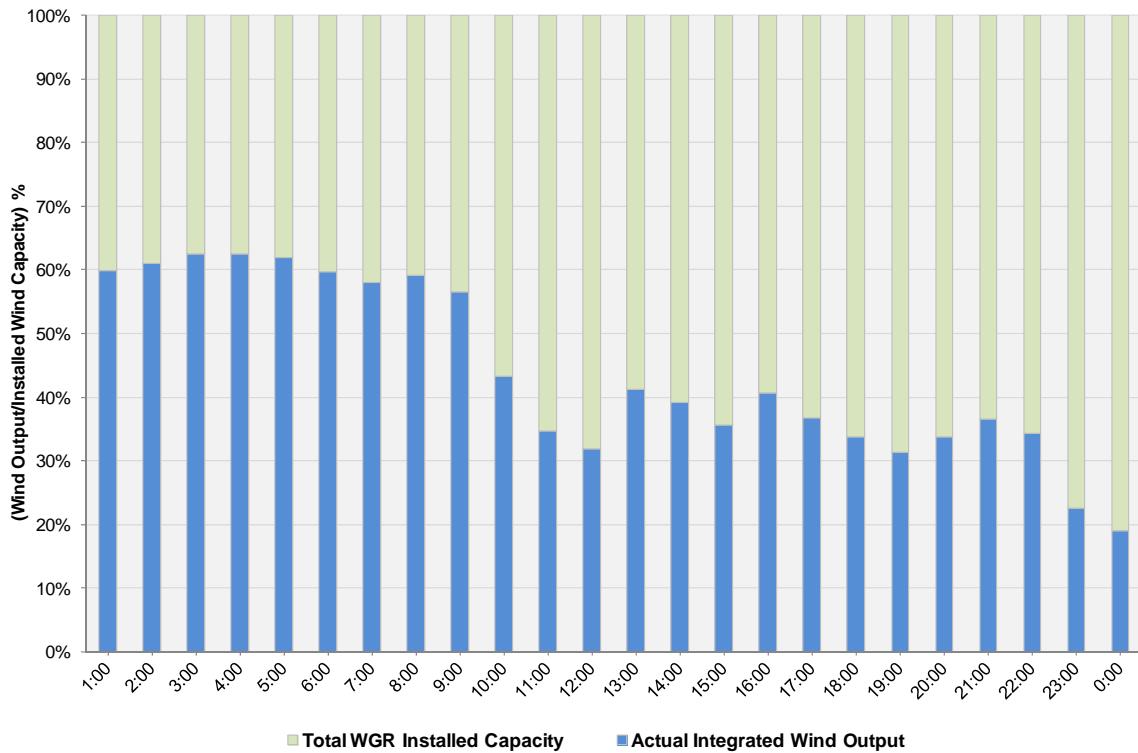
## ERCOT Grid Operations Wind Integration Report: 01/09/12

Peak Load	39,276 MW
Load Peak Hour (HE)	19
Wind over Peak	3,067 MW
Wind Record 10/07/11	7,400 MW
Max Wind Value	6,452 MW
Wind Peak Time	04:10
Wind Integration %	24.39%

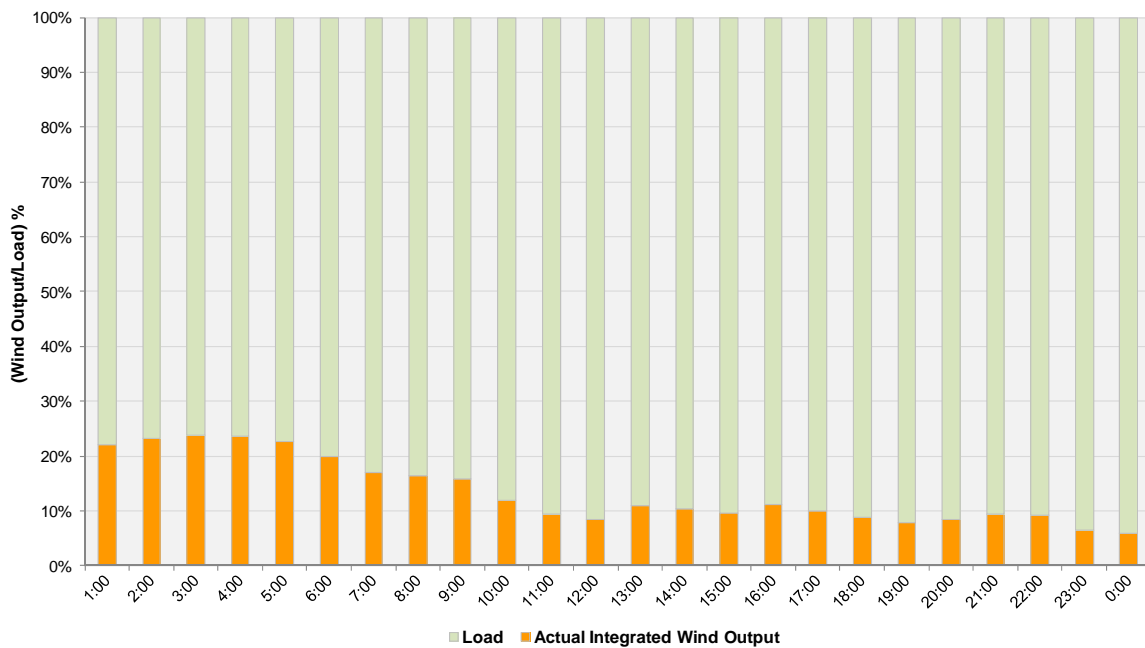
Hourly Average Actual Load vs. Actual Wind Output  
01-09-2012



**Actual Wind Output as a Percentage of the Total Installed Wind Capacity**  
**01-09-2012**



**Actual Wind Output as a Percentage of the ERCOT Load**  
**01-09-2012**



ERCOT Load vs. Actual Wind Output 1/2/2012 - 1/9/2012

